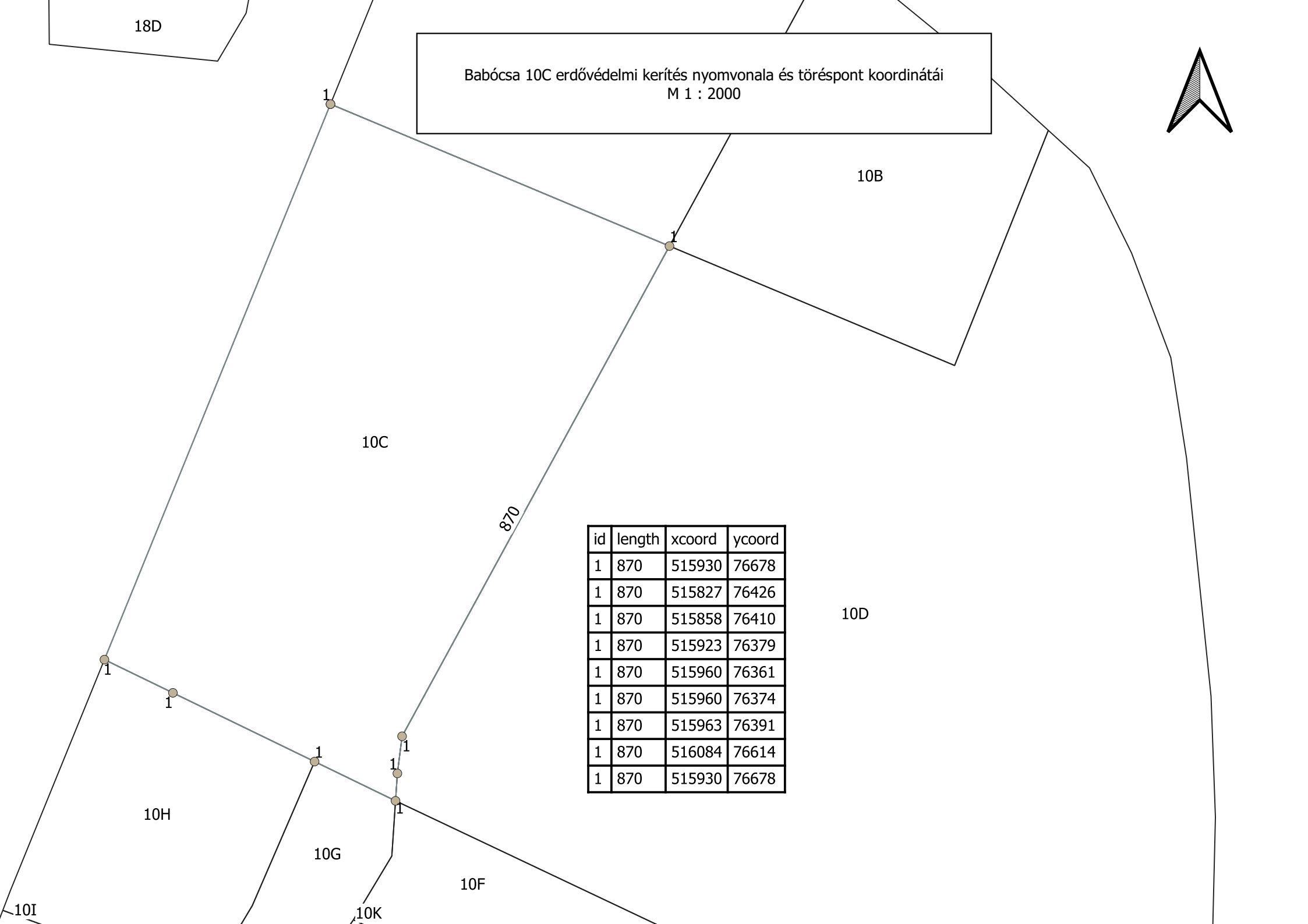
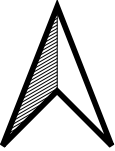


Babócsa 10C erdővédelmi kerítés nyomvonala és töréspont koordinátái
M 1 : 2000



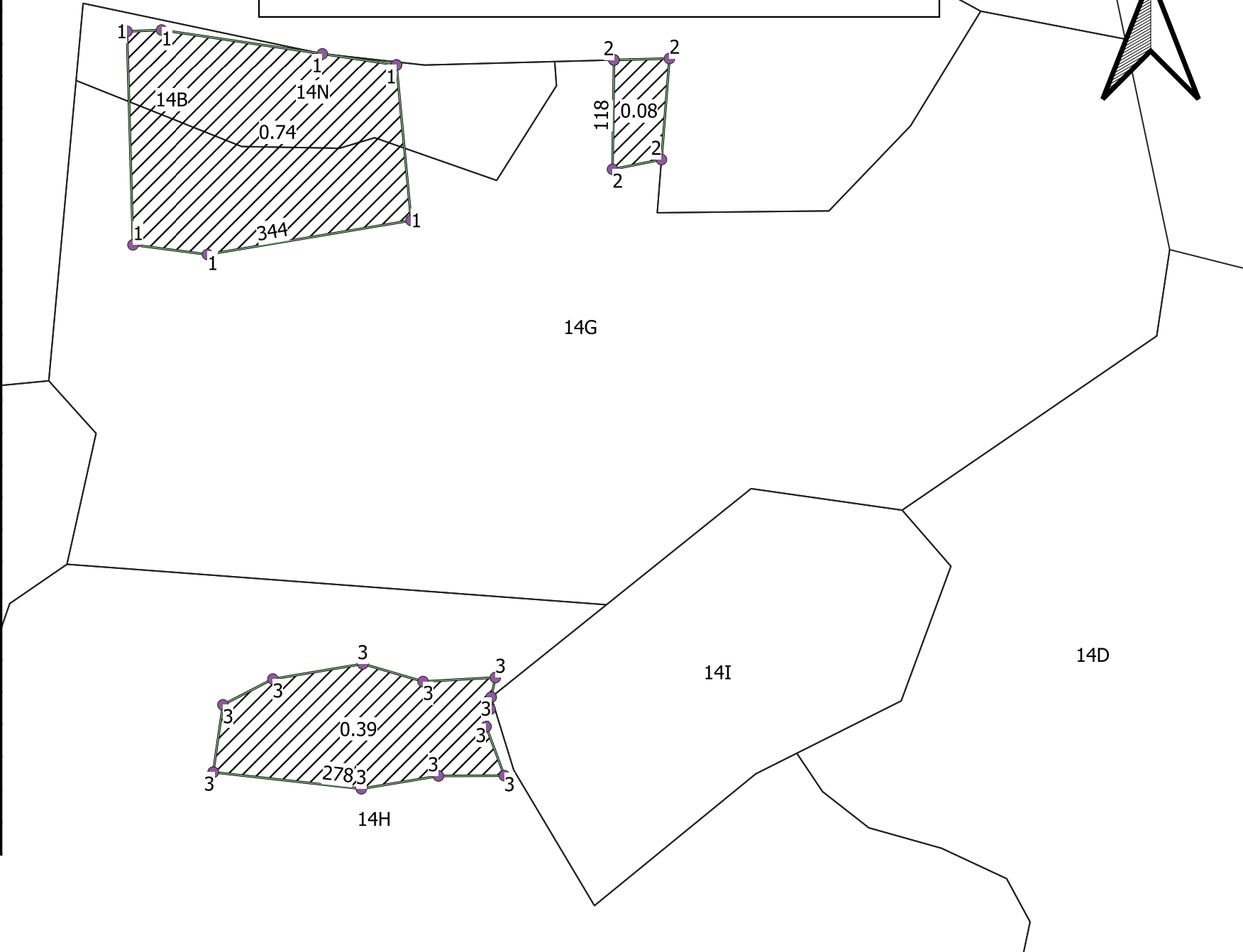
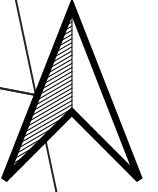
| id | length | xcoord | ycoord |
|----|--------|--------|--------|
| 1 | 870 | 515930 | 76678 |
| 1 | 870 | 515827 | 76426 |
| 1 | 870 | 515858 | 76410 |
| 1 | 870 | 515923 | 76379 |
| 1 | 870 | 515960 | 76361 |
| 1 | 870 | 515960 | 76374 |
| 1 | 870 | 515963 | 76391 |
| 1 | 870 | 516084 | 76614 |
| 1 | 870 | 515930 | 76678 |

| id | area | perimeter | xcoord | ycoord |
|----|------|-----------|--------|--------|
| 1 | 0.74 | 344 | 498925 | 98097 |
| 1 | 0.74 | 344 | 498931 | 98039 |
| 1 | 0.74 | 344 | 498855 | 98027 |
| 1 | 0.74 | 344 | 498827 | 98030 |
| 1 | 0.74 | 344 | 498825 | 98110 |
| 1 | 0.74 | 344 | 498838 | 98110 |
| 1 | 0.74 | 344 | 498898 | 98102 |
| 1 | 0.74 | 344 | 498925 | 98097 |
| 2 | 0.08 | 118 | 499007 | 98099 |
| 2 | 0.08 | 118 | 499027 | 98100 |
| 2 | 0.08 | 118 | 499024 | 98062 |
| 2 | 0.08 | 118 | 499006 | 98058 |
| 2 | 0.08 | 118 | 499007 | 98099 |
| 3 | 0.39 | 278 | 498857 | 97833 |
| 3 | 0.39 | 278 | 498861 | 97859 |
| 3 | 0.39 | 278 | 498879 | 97868 |
| 3 | 0.39 | 278 | 498913 | 97874 |
| 3 | 0.39 | 278 | 498935 | 97867 |
| 3 | 0.39 | 278 | 498962 | 97869 |
| 3 | 0.39 | 278 | 498961 | 97861 |
| 3 | 0.39 | 278 | 498960 | 97857 |
| 3 | 0.39 | 278 | 498959 | 97851 |
| 3 | 0.39 | 278 | 498966 | 97832 |
| 3 | 0.39 | 278 | 498941 | 97832 |
| 3 | 0.39 | 278 | 498912 | 97827 |
| 3 | 0.39 | 278 | 498857 | 97833 |

Berzence 14G, H, N erdővédelmi kerítések töréspontjai és nyomvonala
M 1 : 2000

140

13H



2024. 09. 02. Merkei Gábor

14C

14NY2

15K 15NY1

150

15F